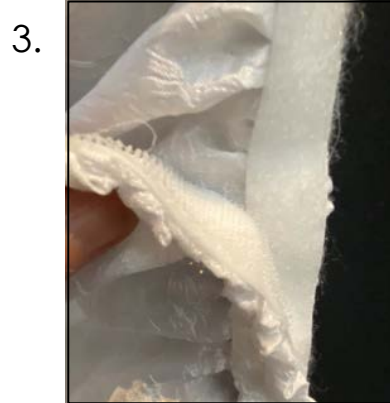
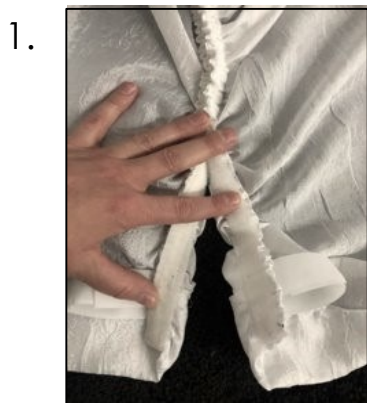


AUSTRIAN INSTALLATION GUIDE

Drape Kings modular Austrian drapes are quick and easy to assemble. Anyone can do it with no tools involved!



Start by piecing together your widths on a flat surface. Marry the hook & loop ends together. On the very outer edge of your drape, add shirred strip to face to hide Velcro. Standard Austrian widths are 2'w, 4'w and 6'w. Current stock height is 16' h. Swoop is 2' w



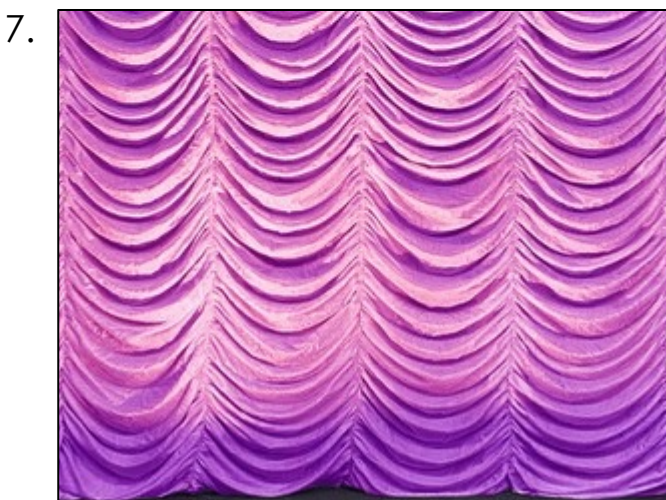
To hang the drape, take elastic bungee, wrap around pipe and loop around plastic ball.



If hanging from P/D system use Velcro tabs on exterior edges to wrap around upright. This prevents Austrian from hour-glassing.



Done!



Add up-lighting for optimal color effects.

OPTIONAL BLACKOUT LINING

In the event your Austrian requires a blackout lining follow the same steps piecing together your blackout liner.



- The blackout is intended to lay flat
- Hang your blackout liner first before the Austrian
- The liner is equipped with standard grommets that allow them to be tied to the rigging unit



Once you have your blackout liner hung, hang the Austrian with the bungees. The bungees allow for the Austrian to sit on the face of the rigging, with the blackout line below.